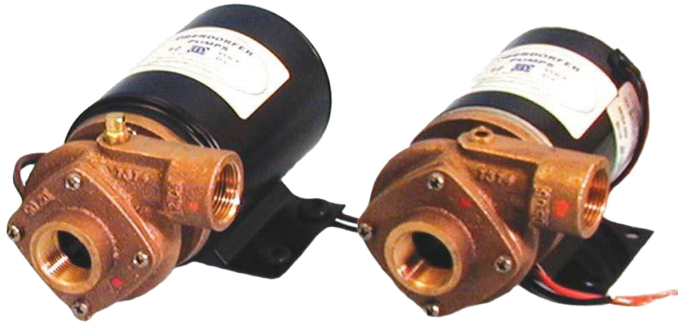




OBERDORFER®

An Ingersoll Rand Business

170M Bronze Pedestal Centrifugal Pump



Features

- Pipe Size: Inlet: 3/4", Outlet: 1" (Option 1/2")
- Rugged corrosion resistant bronze construction
- Compact and light
- Buna Lip Seal STD (Optional Viton lip)
- TEFC Motors with corrosion resistant passivated 316 SS Shafts
 - 1/10 HP permanent Magnet 12V, 24V, 32V DC Motors
 - Rubber base grommets for vibration dampening
 - Insulated leads
- Ideal for:
 - Marine Air Conditioning
 - Engine Block Temperature Control
 - Radiator and Heat Exchanger Circulation
 - Baitwell Circulation

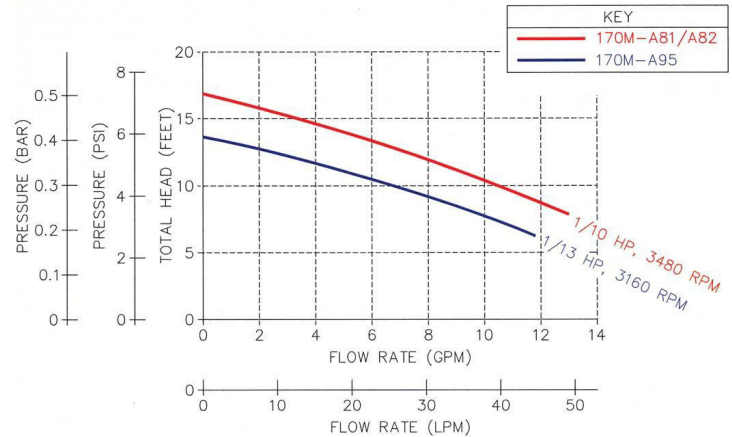
Liquids

One of the outstanding features of this pump and motor unit is its compact size. Although small, adequate motor power is available for pumping water, water solutions, and a wide range of commercial chemicals. Questions about the chemical compatibility of special liquids should be referred to the factory.

Viscous liquids with a maximum viscosity of 2000 Saybolt Seconds Universal can be pumped. However, when pumping viscous liquids (as compared with water) a reduction in flow and pressure occurs and the required horsepower increases.

Performance

Capacity Water at 70°F



Liquids heavier than water require additional horsepower in direct proportion to the increase in specific gravity.

Seal

The lip seal is Buna N with a stainless steel spring reinforcement on a stainless steel motor shaft. The seal is friction press fit in a machined housing counterbore. Excessive system pressures above 15 PSI are not recommended as the seal could be forced out of the pump housing.

Characteristics

These Oberdorfer centrifugal pumps have a single open vane rotating impeller. Liquid enters at the center and is thrown outward radially by centrifugal force. The impeller is not in contact with other pump parts resulting in quiet, efficient pumping action. The flow produced is not positive which permits the discharge line to be shut off completely without danger of overloading motors or bursting lines. Consequently, a relief valve is not required.

These pumps are not self-priming. They must be installed below the liquid level so that the liquid flows to the pump by gravity (flooded suction).

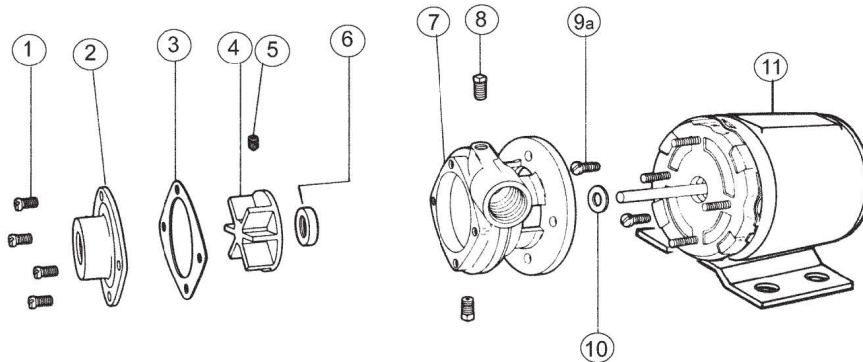
The flow of these pumps can be conveniently controlled by a throttling valve in the discharge line. Horsepower demand will decrease as the pressure increases. Maximum horsepower occurs with a wide open discharge.



OBERDORFER®

An Ingersoll Rand Business

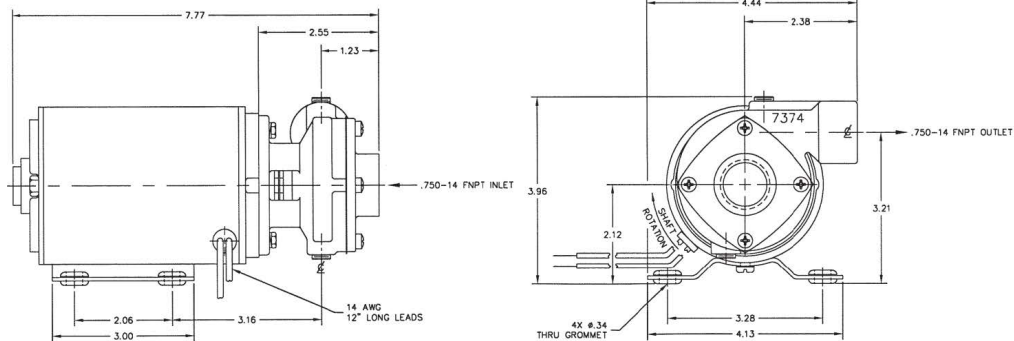
Exploded View and Parts List



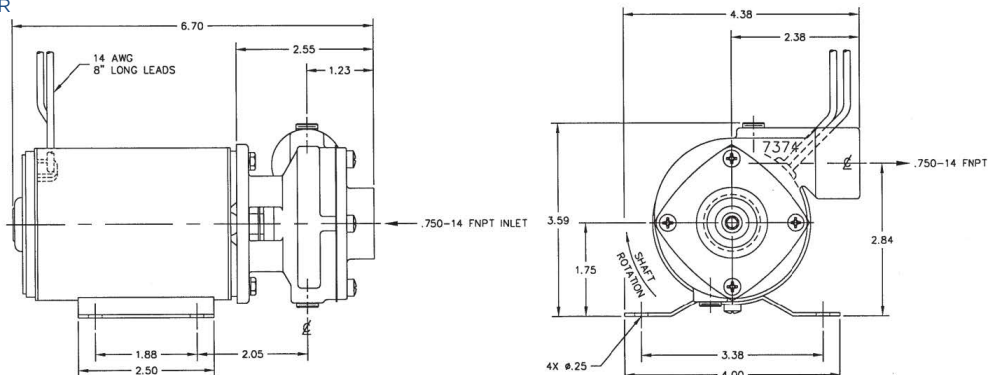
		1	2	3*	4*	5*	6*	7	8	9a	9b	10	11	12	Repair Kit
		Screw	Cover	O-Ring	Impeller	Set Screw	Lip Seal	Body	Plug	Screw	Lock washer	Slinger	Motor	Grommet	
Model	Config	Qty. 4	Qty. 1	Qty. 1	Qty. 1	Qty. 1	Qty. 1	Qty. 1	Qty. 2	Qty. 2	Qty. 4	Qty. 1	Qty. 1	Qty. 4	
OB170M	Std Buna Lip	OB5385	OB7375-1	OB9797-033	OB7272	OB6079	OB6647	OB7374-1	OB6052						OB10911
OB170MS5	Viton Lip	OB5385	OB7375-1	OB9797-033	OB7272	OB6079	OB9986	OB7374-1	OB6052						OB10912
Motor	Config														
A81	1/10 HP, 3480 RPM, 12 VDC, TEFC										OB7424	OB5656	OB6651	OB9950	OB6650
A82	1/10 HP, 3480 RPM, 24 VDC, TEFC										OB7424	OB5656	OB6651	OB9949	OB6650
A87	1/10 HP, 3480 RPM, 32 VDC, TEFC										OB7424	OB5656	OB6651	OB8103	OB6650

Dimensions

170M'S WITH A81 OR A82 MOTOR



170M'S WITH A95 MOTOR



IR Ingersoll Rand

12500 South Pulaski Road
Alsip, IL 60803, USA
Phone (800) 448.1668